



CM HOSPITALITY

IMPACT

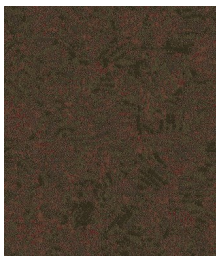


SPECIFICATIONS

Product Type:	Broadloom
Product Name:	IMPACT
Pattern Number:	x8587
Construction:	Infinity Tip Sheared
Gauge:	10
Fiber:	100% Solution Dyed Nylon
Tufted Weight:	32 oz / 1085 g/m ²
Width:	12 ft / 3.65 m
Stitches Per Inch:	14
Pile Height:	0.193" / 0.49 cm
Pattern Repeat:	36" x 36" / 91 cm x 91 cm
Primary Backing:	Polypropylene
Secondary Backing:	Action Back
Density Factor:	5,969 Lbs per syd / 251 kg/m ²

TESTING

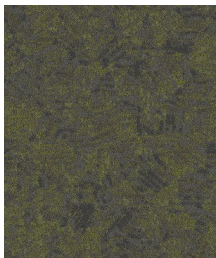
IAQ Green Label Plus	GLP 4826
ASTM-E648 Flooring Radiant Panel:	Class 1
DOC-FF-1-70 Pill Test:	Passes
AATC 134 Electrostatic Propensity:	Less than 3.5 KV
E0622 Smoke Chamber:	Less than 450



BRICKYARD



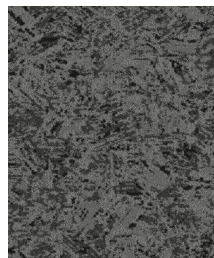
INDY GO



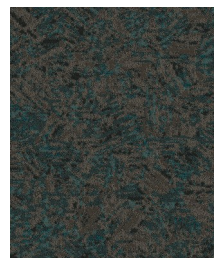
LIGHTNING



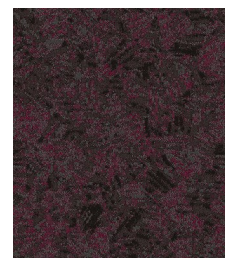
OFF ROAD



SMOKE



TORQUE



VROOM!